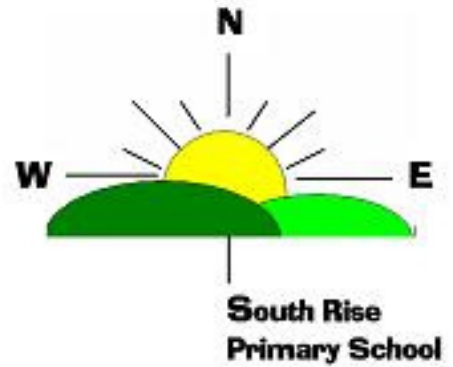


NEWSLETTER

Telephone 020 8854 6813
website: www.lgfl.net/leas/Greenwich/school/Soutrise
Email: headteacher.soutrise.greenwich@lgfl.net



NEWSLETTER ISSUE NO: 27

11th MAY 2009

Dear Parents and Carers,

Important Information

Please note that due to SATS this week there will NOT be a Toddler Group on Thursday 14th May.

PLEASE provide your child/children with a handkerchief or paper tissues (to blow their noses in, sneeze in and then throw in the bin) in order to prevent the spread of germs! Also encourage them to wash their hands regularly, after going to the toilet, before eating and after using a tissue.

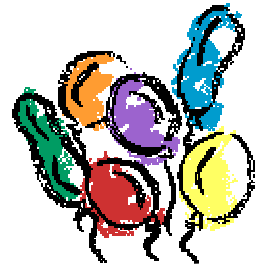
ESOL (English as a Second Language) Classes are held at IMPACT Brewery Road. If you wish to go to these classes you must go to Impact to register.

Local Event at the Glyndon Community Centre

Glyndon Community Centre is planning a Street Party. Why don't you and your child/children help plan for this event.



PLANNING DATES
4.30pm – 6.30pm on
20th May, 27th May, 3rd June, 24th June
Organizer Tayi Artry
STREET PARTY 2:00pm – 6:00pm 4th JULY



END OF DAY PLAYGROUND PROTOCOL

When you come to collect your child/children at the end of the School day, please do not give them sweets, crisps, cans of drinks until you are off the School premises. Our Litter Monitors completely cleared the Playground during Friday, but once School had finished the Playground looked like a landfill site! Litter should be placed in the nearest rubbish bin. Your co-operation will ensure our Playground is a safe and tidy place for the children.

LOST PROPERTY

The Lost Property boxes are once again overflowing in the Year 1 Foyer. Please check the boxes for any missing items that belong to your children. **ANYTHING LEFT BY FRIDAY WILL BE GIVEN TO THE CHARITY SHOP.**

Yours sincerely,

MRS MATHISON
HEADTEACHER.